



Snyderville Basin Water Reclamation District

The Quality of our Water
Reflects the Quality of our Community

2800 Homestead Road
Park City, UT 84098
Phone: 435-649-7993
Fax: 435-649-8040
www.sbwr.org

May 2011 Newsletter

Habit Changes...

By making small, easy changes in our daily habits we can better the quality of our water and our community.

1 Refrain from pouring grease, oil or fats down the drain

Effect: Clogs the pipes downstream of the home/business.

Alternative: Place in sealed container and dispose in trash.

2 Refrain from putting expired/unused pharmaceuticals down the drain

Effect: The compounds in these products can negatively impact aquatic life. Wastewater treatment facilities cannot easily or economically remove these compounds.

Alternative: Place in sealed container and dispose in trash.

3 Reduce the amount of salt used in water softener systems

Effect: Increased salt content in treated wastewater makes it unsuitable for reuse applications (i.e. placing on golf courses). Wastewater treatment facilities cannot easily, or economically, remove these compounds.

Alternative: Check the operating instructions on your system. Most homeowners are using significantly more salt than necessary. Consider using Potassium Chloride instead of Sodium Chloride (more expensive but less harmful to the grass and turf).

4 Refrain from pouring any paints, solvents or other hazardous materials down the drain

Effect: These materials can negatively impact aquatic life. Wastewater treatment facilities cannot easily, or economically remove these compounds.

Alternative: Take these materials to the Summit County Hazardous Waste Receiving Station, located at 3-Mile Landfill near the Rockport Reservoir. Summit County now accepts all hazardous materials year-round at this site.

Our Successes...

SNYDERVILLE BASIN WATER RECLAMATION DISTRICT RECEIVES AWARDS FOR EXCELLENCE

Recently the Snyderville Basin Water Reclamation District captured two coveted state awards for excellence during the annual conference of the Water Environment Association of Utah in St George. Water Environment Association of Utah Awards for 2010 for facilities under 5 MGD include:



*Outstanding Water Reclamation Facility
East Canyon Water Reclamation Facility*



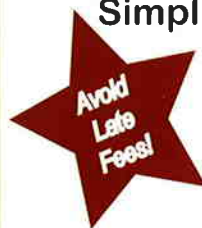
*Outstanding Treatment Operator
Cody Snyder*

“The Snyderville Basin Water Reclamation District is proud of the well-deserved recognition given to Cody and the staff of the East Canyon Water Reclamation Facility” said Michael Luers, General Manager. “We also appreciate that the state association honored our employees for their accomplishments.”

Providing state-of-the-art wastewater collection and reclamation services for Park City, Utah and the surrounding area, the Snyderville Basin Water Reclamation District collects and reclaims the wastewater generated by more than 11,000 homes and commercial enterprises in Park City and the Snyderville Basin. Its mission is “...to protect public health and the environment by developing, integrating, and implementing fiscally responsible solutions to wastewater, water reclamation and watershed protection issues.”

Visit the Snyderville Basin Water Reclamation District’s website at www.sbwr.org for more information.

Simplify your monthly billing with Xpress Bill Pay!



With just a few easy set-up steps, your payments will automatically be taken care of each month.

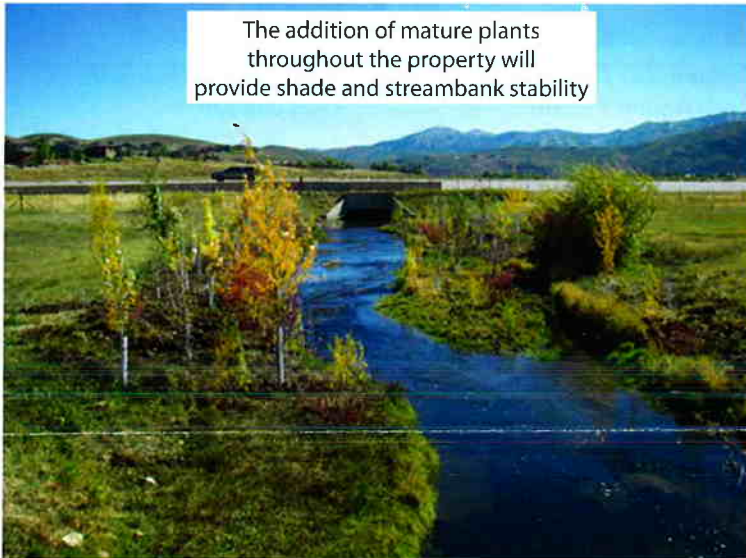
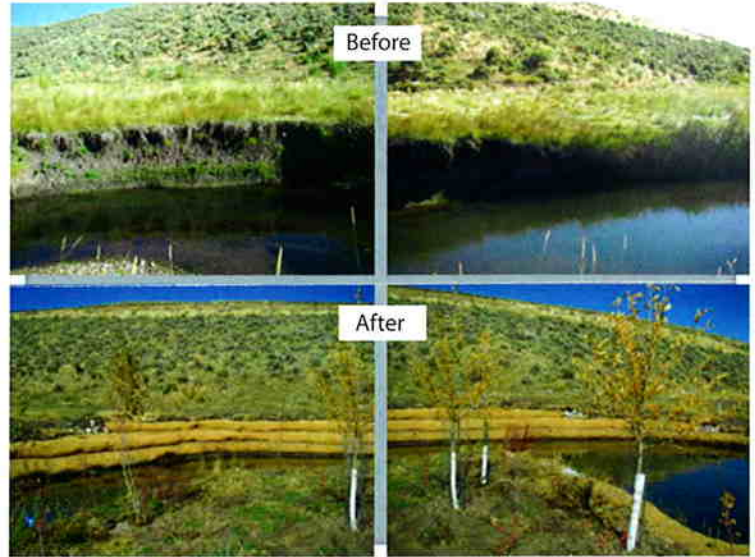
Sign up at: www.xpressbillpay.com

EAST CANYON CREEK RESTORATION PROJECT AT BITNER RANCH

Erosion of streambanks allows sediments to accumulate in the creek. These sediments contain the nutrient Phosphorus, which allows excess growth of algae and aquatic plants. The algae and aquatic plants reduce the amount of oxygen in the water which fish require. The creek within the Bitner Ranch was identified as needing streambank stabilization.

The Snyderville Basin Water Reclamation District obtained an American Resource and Recovery Act (ARRA) grant, through the State's Division of Water Quality, to address the problem. Work on the creek was conducted in the Fall of 2010 using the ARRA grant and other funding sources.

The steepest streambanks were graded and erosion-proof biodegradable fabric was installed to protect them from erosion. Almost 3000 feet of streambank was protected in this manner.



Trees and shrubs were planted to further stabilize the streambanks. Thousands of plants were installed along almost 4000 feet of the creek.

Fencing was installed to protect the plantings and streambanks from grazing animals.



2800 Homestead Road
Park City, UT 84098
Phone: 435-649-7993
Fax: 435-649-8040
www.sbwrld.org

